

Capillary Fittings

Our range of capillary fittings include end feed and solder ring options and are available in both copper and brass, offering a lightweight, fast and simple joint for copper pipe, ideal for domestic and commercial heating and plumbing applications.

Available in sizes from 6mm to 159mm, we have a fitting to suit most applications and projects. All fittings are guaranteed against manufacturing defects for 25 years and are manufactured to BS EN 1254 and WRAS approved.

End Feed Fittings

Offering a complete range of sizes, from 6mm to 159mm our end feed fittings provide a traditional connection for commercial and residential installations. And our range of larger fittings is ideal for more complex and demanding commercial projects, providing reliability and security of connection.

The end feed joint is created through the process of capillary action as solder is applied to the end feed fitting to make an easy, effective connection.

Solder Ring Fittings

With a comprehensive selection of fittings, Flowflex solder ring fittings are available in copper and brass and are manufactured to the highest standards. Sizes range from 8mm to 54mm.

All fittings comply with British and International standards, manufactured to BS EN 1254 under quality management standard ISO9001:2008. A ring of high quality lead-free solder is located in each fitting with the joint secured through capillary action as the pre-soldered fitting is heated to make both an easy and effective connection, without the need to use additional solder.

Dimensions

End Feed

Equal fittings with uniform connections are shown with one size. e.g. 15mm

Reduced fittings with two connections are shown with the largest size first. e.g. 22 x 15mm

Code (European)

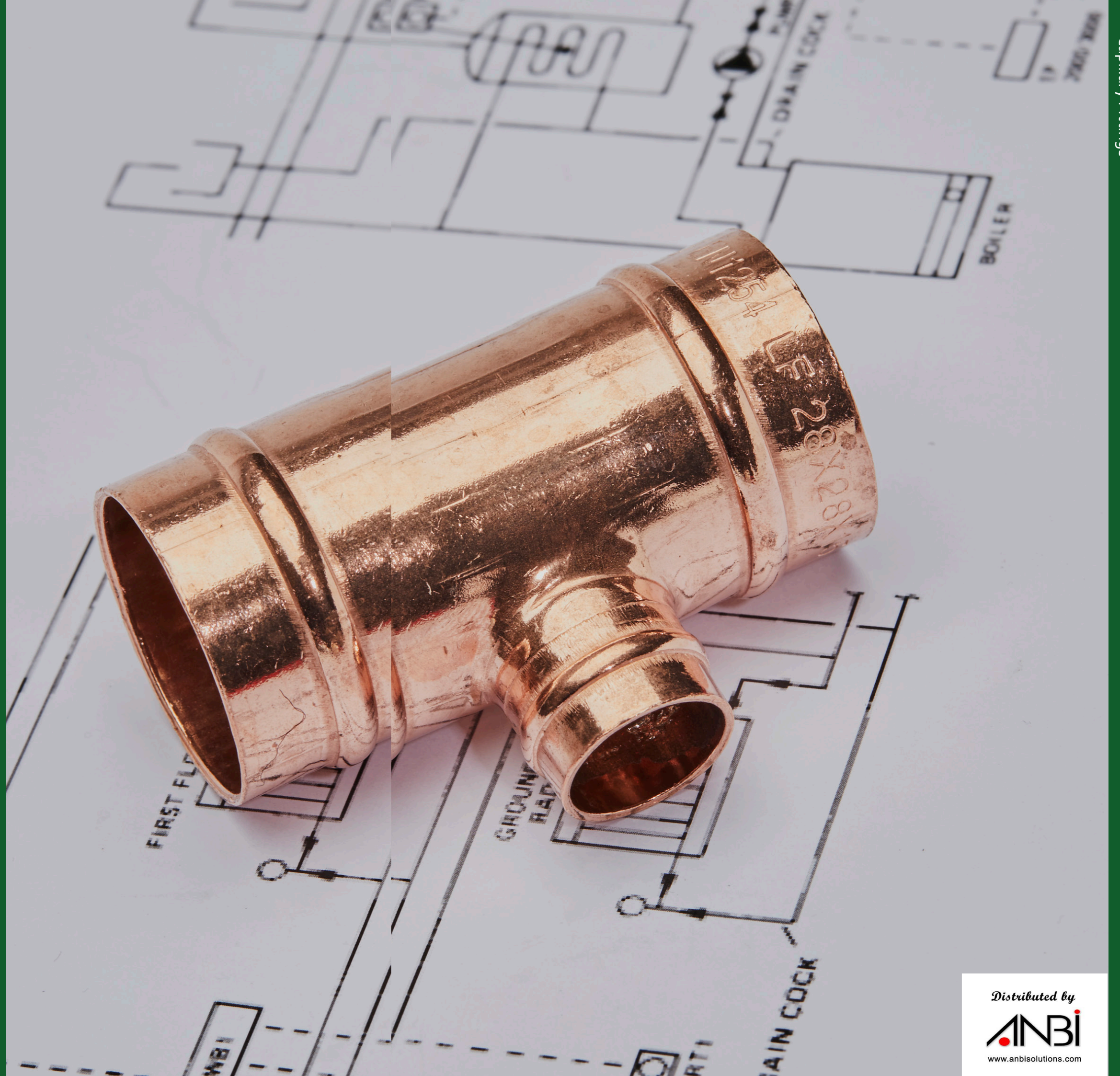
Tees and other reduced fittings of unequal sizes are shown with the largest end first, then the branch, followed by the remaining end on the run. e.g. 5130R.221522

Solder Ring

Equal fittings with uniform connections are shown with one size. e.g. 15mm

Reduced fittings with two connections are shown with the largest size first. e.g. 22 x 15mm

Tees and other reduced fittings of unequal sizes are shown with the largest end first, then the opposite run, followed by the branch. e.g. 22 x 22 x 15mm



End Feed Fittings to EN 1254-1 and EN 1254-4



Code: **5001A**
Page 44



Code: **5002A**
Page 44, 51



Code: **5040**
Page 44



Code: **5041**
Page 44, 51



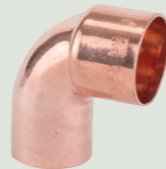
Code: **5085**
Page 44



Code: **5086**
Page 44



Code: **5090**
Page 45, 51



Code: **5092**
Page 45, 51



Code: **5130**
Page 45, 51



Code: **5130R**
Page 45, 46



Code: **5240**
Page 46, 52



Code: **5243**
Page 46, 52



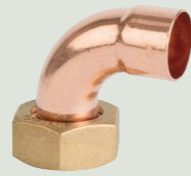
Code: **5270**
Page 47, 52



Code: **5301**
Page 47, 53



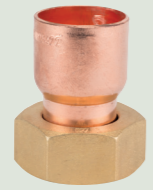
Code: **C803SFEF**
Page 47



Code: **C805SCEF**
Page 47



Code: **C901EF**
Page 47



Code: **C903SFEF**
Page 47



Code: **C904LEF**
Page 48



Code: **C905SCEF**
Page 48

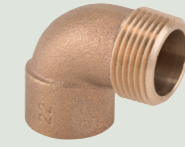
End Feed Fittings to EN 1254-1 and EN 1254-4



Code: **C906EF**
Page 48



Code: **4090G**
Page 48



Code: **4092G**
Page 48



Code: **4130G**
Page 48



Code: **4243G**
Page 49, 53



Code: **4270G**
Page 49, 53



Code: **4341G**
Page 49



Code: **B020**
Page 49



Code: **EFMUC**
Page 49



Code: **FA**
Page 50



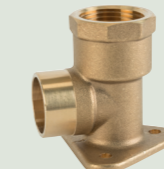
Code: **371**
Page 50



Code: **P440EF**
Page 50



Code: **P737EF**
Page 50



Code: **P803WPEF**
Page 50

Solder Ring Fittings to EN 1254-1 and EN 1254-4



Code: **C701SR**
Page 54



Code: **C702SR**
Page 54



Code: **C703SR**
Page 54



Code: **C704SR**
Page 54



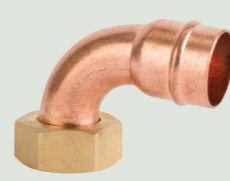
Code: **C705SR**
Page 54



Code: **C706SR**
Page 55



Code: **C801SR**
Page 55



Code: **C803FSR**
Page 55



Code: **C803SR**
Page 55



Code: **C804SR**
Page 55



Code: **C805CSR**
Page 55



Code: **C901SR**
Page 56



Code: **C901SR**
Page 56



Code: **C901SR**
Page 56

Solder Ring Fittings to EN 1254-1 and EN 1254-4



Code: **C903FSR**
Page 56



Code: **C904SR**
Page 57



Code: **C905CSR**
Page 57



Code: **C923SR**
Page 57



Code: **P717SR**
Page 57



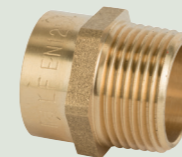
Code: **P802TSR**
Page 57



Code: **P803SR**
Page 58



Code: **P803WPSR**
Page 58



Code: **P902TSR**
Page 58



Code: **P903SR**
Page 58

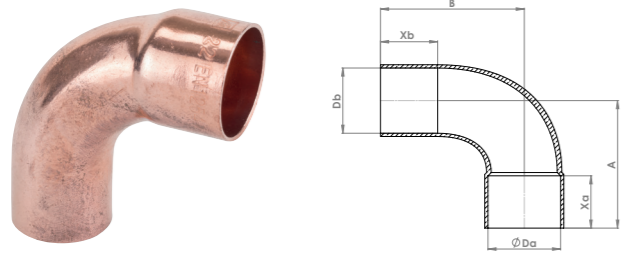


Code: **SRFUC**
Page 58



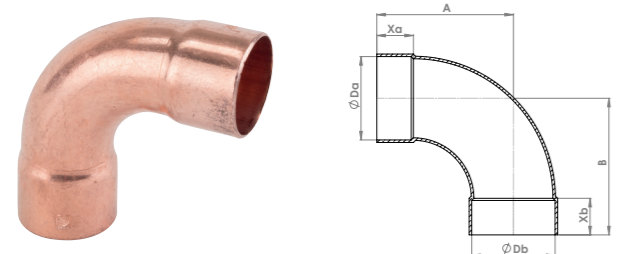
Code: **SRMUC**
Page 58

5001A Long Radius Street Elbow



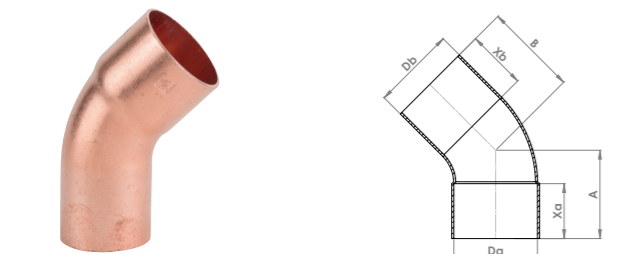
Code	Size	A	B	C	Xa	Xb	Xc
5001A.12	12 x 12mm	23	25	8			
5001A.15	15 x 15mm	29	31	11			
5001A.22	22 x 22mm	42	44	15			
5001A.28	28 x 28mm	52	54	18			
5001A.35	35 x 35mm	65	67	23			
5001A.42	42 x 42mm	77	79	27			
5001A.54	54 x 54mm	97	99	32			

5002A Long Radius Elbow



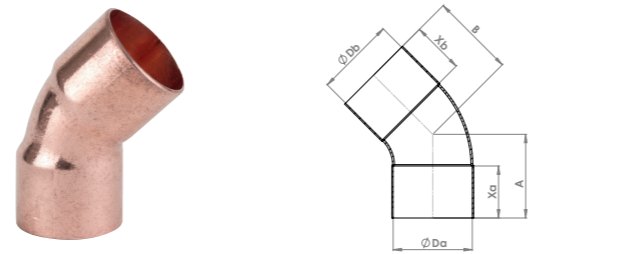
Code	Size	A	B	C	Xa	Xb	Xc
5002A.12	12 x 12mm	23	23	8	8		
5002A.15	15 x 15mm	29	29	11	11		
5002A.22	22 x 22mm	42	42	15	15		
5002A.28	28 x 28mm	52	52	18	18		
5002A.35	35 x 35mm	65	65	23	23		
5002A.42	42 x 42mm	77	77	27	27		
5002A.54	54 x 54mm	97	97	32	32		

5040 Elbow 45° Street



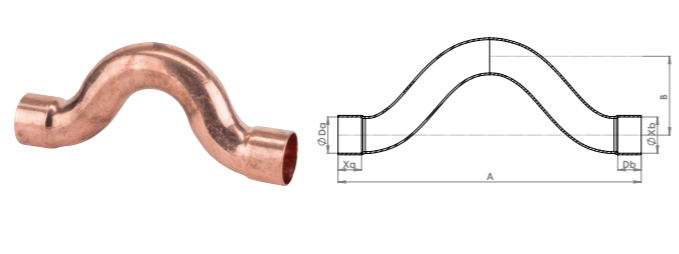
Code	Size	A	B	C	Xa	Xb	Xc
5040.12	12 x 12mm	13	15	8			
5040.15	15 x 15mm	16	18	10			
5040.22	22 x 22mm	23	25	15			
5040.28	28 x 28mm	28	30	18			
5040.35	35 x 35mm	37	39	23			
5040.42	42 x 42mm	42	44	27			
5040.54	54 x 54mm	52	54	32			

5041 Elbow 45°



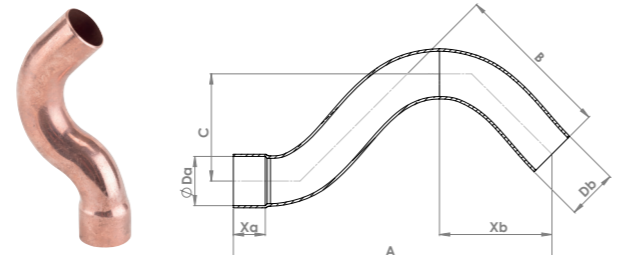
Code	Size	A	B	C	Xa	Xb	Xc
5041.10	10 x 10mm	13	13	7	7		
5041.15	15 x 15mm	17	17	11	11		
5041.22	22 x 22mm	23	23	15	15		
5041.28	28 x 28mm	28	28	17	17		
5041.35	35 x 35mm	37	37	23	23		
5041.42	42 x 42mm	42	42	27	27		
5041.54	54 x 54mm	52	52	32	32		

5085 Crossover Full



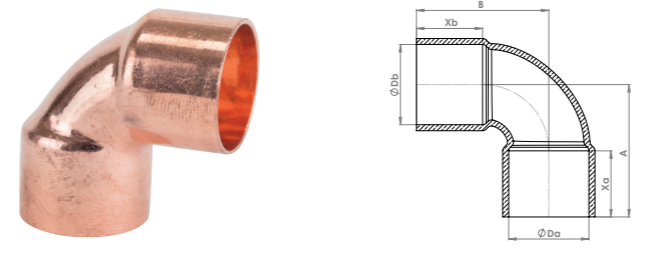
Code	Size	A	B	C	Xa	Xb	Xc
5085.15	15 x 15mm	112	112	11	11		
5085.22	22 x 22mm	145	35	16	16		

5086 Crossover Part



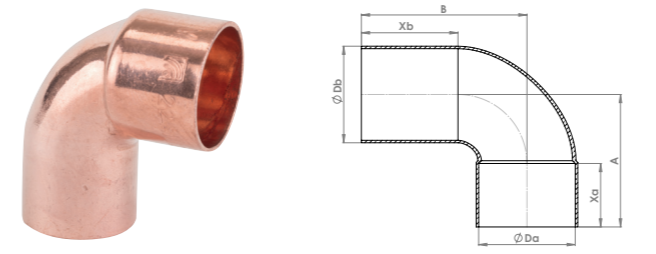
Code	Size	A	B	C	Xa	Xb	Xc
5086.15	15 x 15mm	93	35	27	13	43	
5086.22	22 x 22mm	120	45	35	14	54	

5090 Elbow



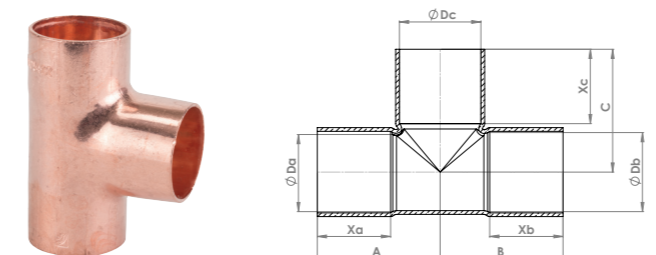
Code	Size	A	B	C	Xa	Xb	Xc
5090.08	8 x 8mm	13	13	6	6		
5090.10	10 x 10mm	15	15	7	7		
5090.12	12 x 12mm	16	16	8	8		
5090.15	15 x 15mm	19	19	10	10		
5090.22	22 x 22mm	28	28	15	15		
5090.28	28 x 28mm	35	35	18	18		
5090.35	35 x 35mm	46	46	23	23		
5090.42	42 x 42mm	55	55	27	27		
5090.54	54 x 54mm	70	70	32	32		

5092 Elbow Street



Code	Size	A	B	C	Xa	Xb	Xc
5092.10	10 x 10mm	15	17	7			
5092.15	15 x 15mm	19	21	8			
5092.22	22 x 22mm	28	30	12			
5092.28	28 x 28mm	35	37	16			
5092.35	35 x 35mm	46	54	24			
5092.42	42 x 42mm	56	66	29			
5092.54	54 x 54mm	71	82	39			

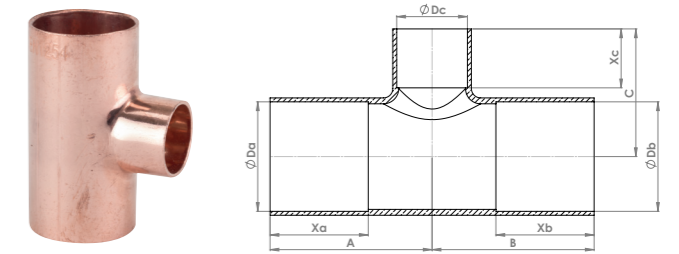
5130 Tee



Code	Size	A	B	C	Xa	Xb	Xc
5130.06	6 x 6 x 6mm	11	11	11	6	6	6
5130.08	8 x 8 x 8mm	12	12	12	6	6	6
5130.10	10 x 10 x 10mm	14	14	14	8	8	8
5130.12	12 x 12 x 12mm	18	18	18	9	9	9
5130.15	15 x 15 x 15mm	20	20	20	11	11	11
5130.22	22 x 22 x 22mm	28	28	28	16	16	16

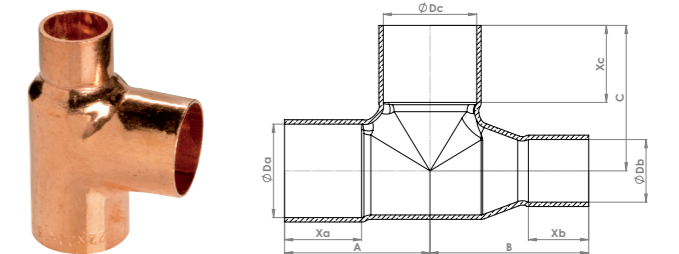
Code	Size	A	B	C	Xa	Xb	Xc
5130.28	28 x 28 x 28mm	34	34	34	19	19	19
5130.35	35 x 35 x 35mm	42	42	42	22	22	22
5130.42	42 x 42 x 42mm	50	50	50	27	27	27
5130.54	54 x 54 x 54mm	61	61	61	32	32	32

5130R Tee Reducing Branch



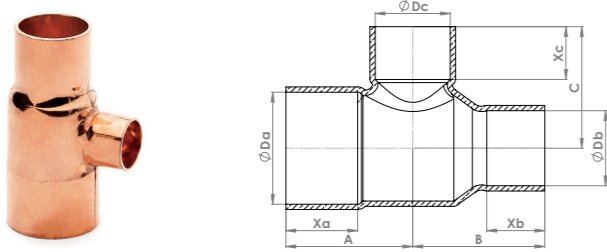
Code	Size	A	B	C	Xa	Xb	Xc
5130R.151015	15 x 15 x 10mm	17	17	17	6	9	6
5130R.221022	22 x 22 x 10mm	25	25	17	9	12	6
5130R.221522	22 x 22 x 15mm	25	25	23	9	12	9
5130R.281528	28 x 28 x 15mm	28	28	26	9	15	9
5130R.282215	28 x 15 x 22mm	31	30	31	12	15	19
5130R.281522	28 x 22 x 15mm	28	28	26	9	15	12
5130R.282228	28 x 28 x 22mm	31	31	31	12	15	12
5130R.351535	35 x 35 x 15mm	32	32	30	9	19	0
5130R.352235	35 x 35 x 22mm	36	36	35	13	19	13
5130R.352835	35 x 35 x 28mm	38	38	38	15	19	15
5130R.421542	42 x 42 x 15mm	36	36	34	9	23	9
5130R.422242	42 x 42 x 22mm	40	40	39	13	23	13
5130R.422842	42 x 42 x 28mm	43	43	42	16	23	16
5130R.423542	42 x 42 x 35mm	46	46	46	19	23	19
5130R.541554	54 x 54 x 15mm	41	41	40	9	29	9
5130R.542254	54 x 54 x 22mm	45	45	45	13	29	13
5130R.542854	54 x 54 x 28mm	48	48	48	16	29	16
5130R.543554	54 x 54 x 35mm	51	51	52	19	29	19
5130R.544254	54 x 54 x 42mm	55	55	56	23	29	23

5130R Tee Reducing End



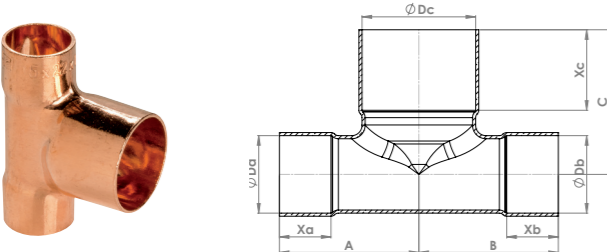
Code	Size	A	B	C	Xa	Xb	Xc
5130R.151510	15 x 10 x 15mm	19	19	19	8	8	11
5130R.222215	22 x 15 x 22mm	28	27	28	12	12	16
5130R.282815	28 x 15 x 28mm	34	33	34	15	15	22
5130R.282822	28 x 22 x 28mm	34	35	34	15	15	19
5130R.353522	35 x 22 x 35mm	42	42	42	19	19	26
5130R.353528	35 x 28 x 35mm	42	42	42	19	19	23
5130R.424235	42 x 35 x 42mm	50	50	50	23	23	27
5130R.545442	54 x 42 x 54mm	61	62	61	29	29	35

5130R Tee Reducing Branch & End



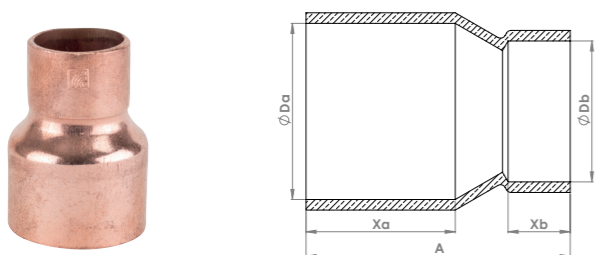
Code	Size	A	B	C	Xa	Xb	Xc
5130R.221515	22 x 15 x 15mm	25	24	23	9	12	13
5130R.281515	28 x 15 x 15mm	28	27	26	9	15	16
5130R.282222	28 x 22 x 22mm	31	32	31	12	15	16
5130R.352222	35 x 22 x 22mm	36	37	35	13	19	21
5130R.352828	35 x 28 x 28mm	38	40	38	15	19	21
5130R.423535	42 x 35 x 35mm	46	46	46	19	23	23

5130R Tee Reducing Both Ends



Code	Size	A	B	C	Xa	Xb	Xc
5130R.152215	15 x 15 x 22mm	27	27	28	16	12	16
5130R.222822	22 x 22 x 28mm	35	35	34	19	15	19
5130R.352228	35 x 28 x 22mm	36	37	35	13	19	18

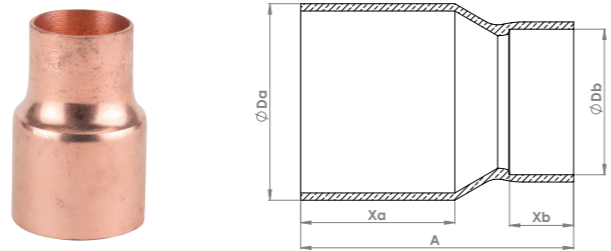
5240 Coupler Reducing



Code	Size	A	B	C	Xa	Xb	Xc
5240.1008	10 x 8mm	17					
5240.1208	12 x 8mm	19					
5240.1508	15 x 8mm	24					
5240.1510	15 x 10mm	24					
5240.1512	15 x 12mm	24					
5240.2212	22 x 12mm	32					
5240.2215	22 x 15mm	32					
5240.2815	28 x 15mm	38					
5240.2822	28 x 22mm	40					
5240.3522	35 x 22mm	48					

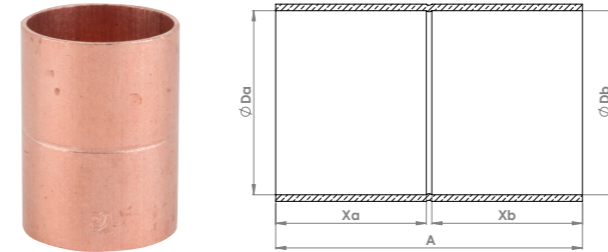
Code	Size	A	B	C	Xa	Xb	Xc
5240.3522	35 x 22mm	48					
5240.3528	35 x 28mm	48					
5240.4228	42 x 28mm	56					
5240.4235	42 x 35mm	60					
5240.5422	54 x 22mm	70					
5240.5428	54 x 28mm	70					
5240.5435	54 x 35mm	70					

5243 Fitting Reducer



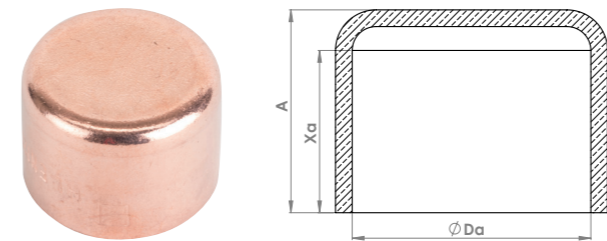
Code	Size	A	B	C	Xa	Xb	Xc
5243.0806	8 x 6mm	16			6		
5243.1006	10 x 6mm	20			6		
5243.1008	10 x 8mm	20			8		
5243.1210	12 x 10mm	22			8		
5243.1508	15 x 8mm	26			7		
5243.1510	15 x 10mm	24			8		
5243.1512	15 x 12mm	26			8		
5243.2212	22 x 12mm	33			8		
5243.2215	22 x 15mm	35			13		
5243.2812	28 x 12mm	41			9		
5243.2815	28 x 15mm	43			11		
5243.2822	28 x 22mm	44			16		
5243.3515	35 x 15mm	50			11		
5243.3522	35 x 22mm	50			15		
5243.3528	35 x 28mm	50			18		
5243.3215	42 x 15mm	65			11		
5243.4222	42 x 22mm	58			16		
5243.4228	42 x 28mm	58			18		
5243.4235	42 x 35mm	60			25		
5243.5415	54 x 15mm	70			10		
5243.5422	54 x 22mm	70			18		
5243.5428	54 x 28mm	70			25		
5243.5435	54 x 35mm	70			25		
5243.5442	54 x 42mm	70			25		

5270 Coupler



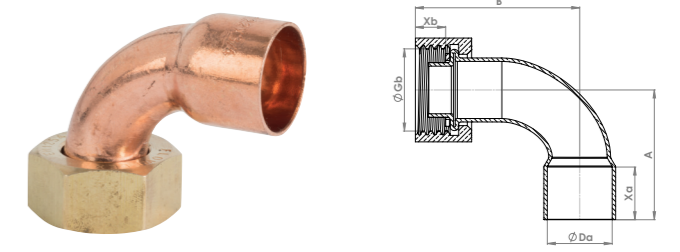
Code	Size	A	B	C	Xa	Xb	Xc
5270.08	8 x 8mm	15			6	6	
5270.10	10 x 10mm	17			7	7	
5270.12	12 x 12mm	19			8	8	
5270.15	15 x 15mm	24			11	11	
5270.22	22 x 22mm	33			15	15	
5270.28	28 x 28mm	40			18	18	
5270.35	35 x 35mm	49			23	23	
5270.42	42 x 42mm	58			27	27	
5270.54	54 x 54mm	69			32	32	

5301 Stop End



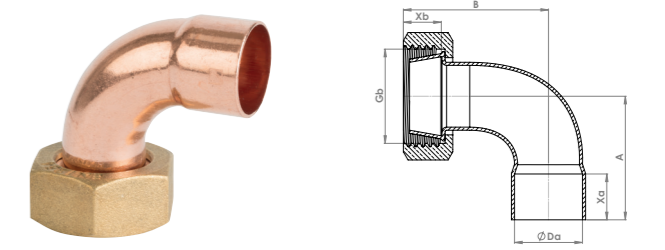
Code	Size	A	B	C	Xa	Xb	Xc
5301.08	8mm	9			6		
5301.10	10mm	9			7		
5301.12	12mm	10			8		
5301.15	15mm	12			10		
5301.22	22mm	17			15		
5301.28	28mm	20			18		
5301.35	35mm	25			23		
5301.42	42mm	29			27		
5301.54	54mm	34			32		

C803SFEF Tap Connector Bent



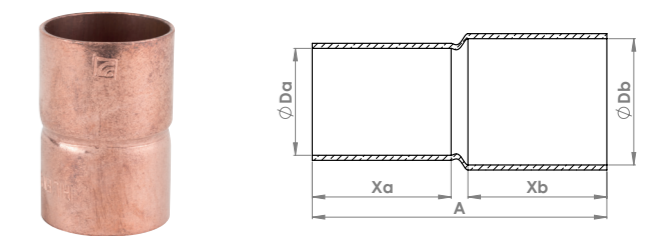
Code	Size	A	B	C	Xa	Xb	Xc
C803SFEF.1	15mm x 1/2"	35	35	10	7		
C803SFEF.2	22mm x 3/4"	44	45	15	8		

C805SCEF Cylinder Union Bent



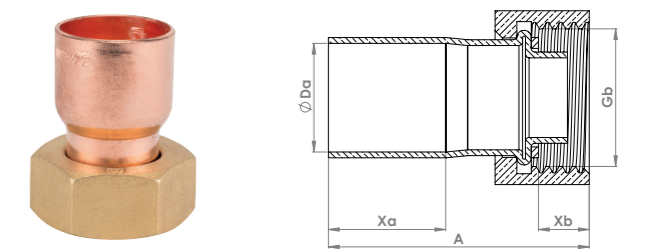
Code	Size	A	B	C	Xa	Xb	Xc
C805SCEF.4	22mm x 1"	41	45	16	9		

C901EF Metric x Imperial Coupler



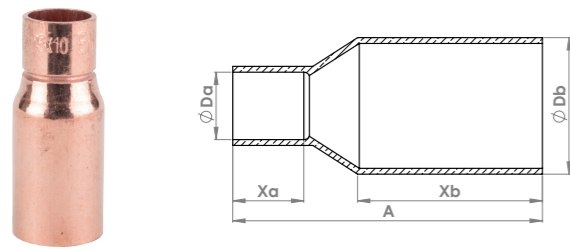
Code	Size	A	B	C	Xa	Xb	Xc
C901EF.245	15mm x 1/2"	23			11	11	
C901EF.25	22mm x 3/4"	36			16	15	
C901EF.26	28mm x 1"	40			20	19	
C901EF.27	35mm x 1 1/4"	53			23	23	

C903SFEF Straight Tap Connector



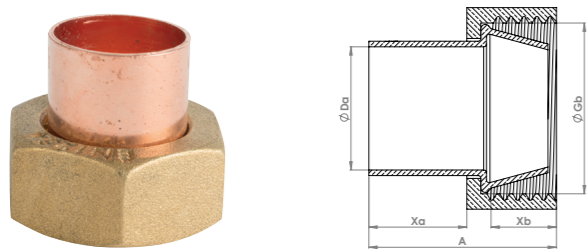
Code	Size	A	B	C	Xa	Xb	Xc
C903SFEF.1	15mm x 1/2"	33			12	8	
C903SFEF.2	15mm x 3/4"	38			12	8	
C903SFEF.3	22mm x 3/4"	45			17	8	

C904LEF Long Fitting Reducer



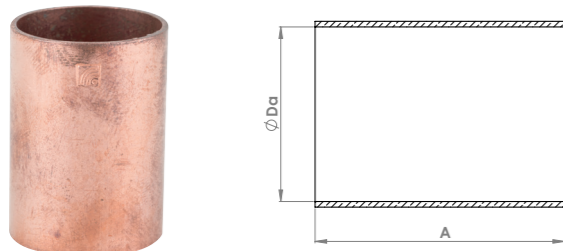
Code	Size	A	B	C	Xa	Xb	Xc
C904LEF.17	15 x 8mm	38			7	22	
C904LEF.18	15 x 10mm	37			8	21	

C905SCEF Straight Cylinder Union



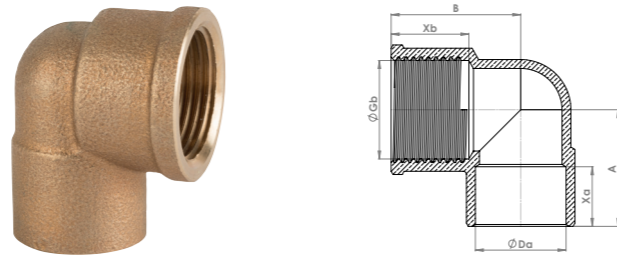
Code	Size	A	B	C	Xa	Xb	Xc
C905SCEF.4	22mm x 1"	34			30	11	
C905SCEF.5	28mm x 1"	52			19	12	

C906EF Coupler Slip



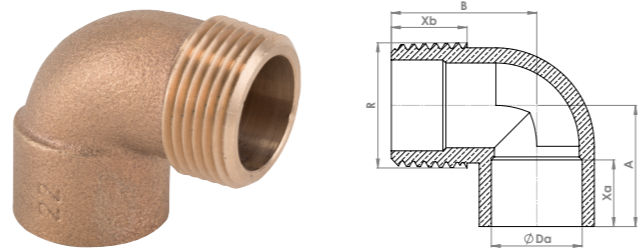
Code	Size	A	B	C	Xa	Xb	Xc
C906EF.05	15mm	24					
C906EF.08	22mm	33					
C906EF.09	28mm	40					
C906EF.10	35mm	48					

4090G Adaptor Female Elbow



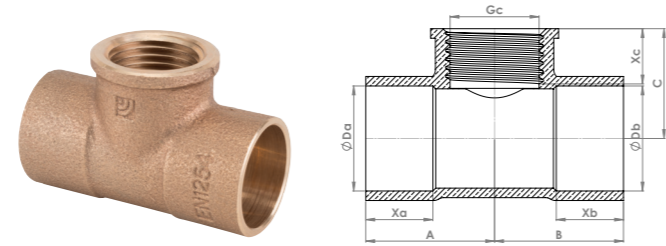
Code	Size	A	B	C	Xa	Xb	Xc
4090G.15X1/2	15mm x 1/2"	22	19	10	12		
4090G.22X1/2	22mm x 1/2"	27	22	15	12		
4090G.22X3/4	22mm x 3/4"	30	23	15	14		
4090G.28X1	28mm x 1"	36	40	18	20		
4090G.35X1.1/4	35mm x 1 1/4"	43	46	23	22		
4090G.42X1.1/2	42mm x 1 1/2"	56	50	27	22		
4090G.54X2	54mm x 2"	64	54	32	21		

4092G Adaptor Male Elbow



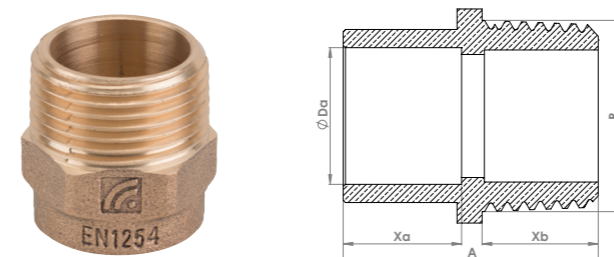
Code	Size	A	B	C	Xa	Xb	Xc
4092G.15X1/2	15mm x 1/2"	20	23	10	12		
4092G.22X3/4	22mm x 3/4"	33	29	15	12		
4092G.28X1	28mm x 1"	35	36	18			

4130G Adaptor Female Tee



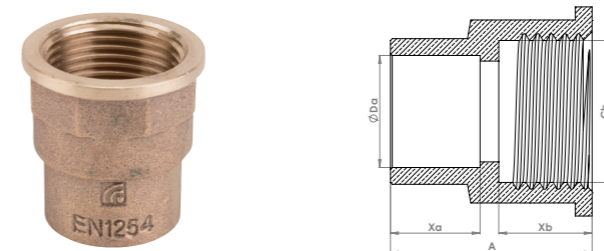
Code	Size	A	B	C	Xa	Xb	Xc
4130G.15X1/2X15	15 x 15mm x 1/2"	22	22	27	10	10	18
4130G.22X1/2X22	22 x 22mm x 1/2"	27	27	23	15	15	13
4130G.22X3/4X22	22 x 22mm x 3/4"	28	28	32	15	15	18
4130G.28X1/2X28	28 x 28mm x 1/2"	31	31	26	19	19	15
P717EF.6	28 x 28mm x 3/4"	33	33	38	18	18	19

4243G Adaptor Male Straight



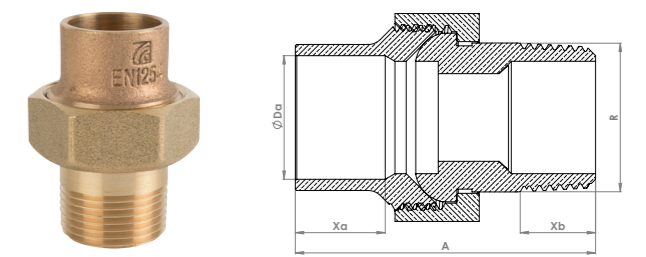
Code	Size	A	B	C	Xa	Xb	Xc
P902TEF.04	8mm x 1/4"	26			7	13	
P902TEF.09	12mm x 1/4"	26			8	13	
P902TEF.12	15mm x 1/4"	29			12	13	
4243G.15X1/2	15mm x 1/2"	28			13	12	
4243G.15X3/4	15mm x 3/4"	29			10	14	
4243G.15X3/8	15mm x 3/8"	22			10	9	
4243G.22X1	22mm x 1"	31			16	17	
4243G.22X1/2	22mm x 1/2"	30			15	12	
4243G.22X3/4	22mm x 3/4"	28			15	13	
4243G.28X1	28mm x 1"	33			18	15	
4243G.35X1.1/4	35mm x 1 1/4"	44			23	19	
4243G.35X1	35mm x 1"	43			23	16	
4243G.42X1.1/2	42mm x 1 1/2"	50			27	21	
4243G.54X2	54mm x 2"	57			27	24	

4270G Adaptor Female Straight



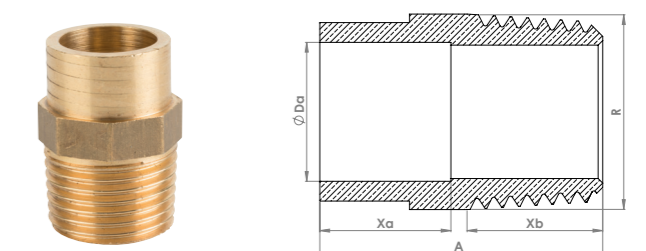
Code	Size	A	B	C	Xa	Xb	Xc
4270G.15X1/2	15mm x 1/2"	27			12	12	
P903EF.10	15mm x 1/4"	27			11	13	
4270G.15X3/4	15mm x 3/4"	27			10	13	
4270G.22X1	22mm x 1"	39			15	18	
4270G.22X1/2	22mm x 1/2"	31			15	13	
4270G.22X3/4	22mm x 3/4"	35			15	16	
4270G.28X1	28mm x 1"	40			18	19	
4270G.35X1.1/4	35mm x 1 1/4"	48			23	23	
4270G.42X1.1/2	42mm x 1 1/2"	50			27	20	
4270G.54X2	54mm x 2"	55			27	25	

4341G Adaptor Male Union



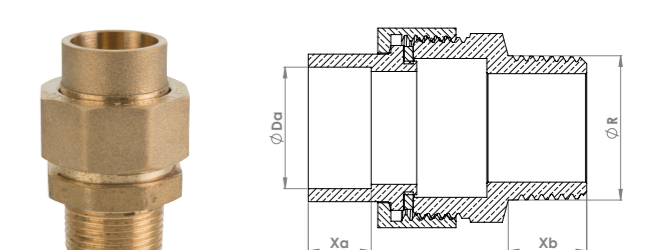
Code	Size	A	B	C	Xa	Xb	Xc
4341G.15X1/2	15mm x 1/2"	45			11	11	
4341G.22X3/4	22mm x 3/4"	53			16	14	
4341G.28X1	28mm x 1"	65			19	16	
4341G.35X1.1/4	35mm x 1 1/4"	76			26	18	
4341G.42X1.1/2	42mm x 1 1/2"	93			28	20	
4341G.54X2	54mm x 2"	105			34	22	

B020 Adaptor Male Straight - Taper



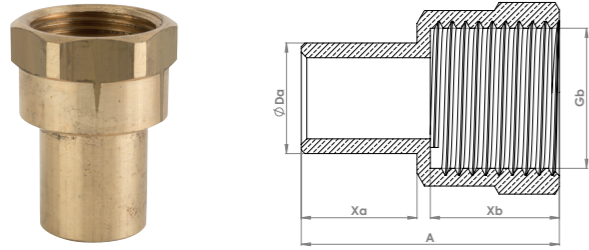
Code	Size	A	B	C	Xa	Xb	Xc
B020.01	15mm x 1/2"	30			14	14	

EFMUC Straight Male Union



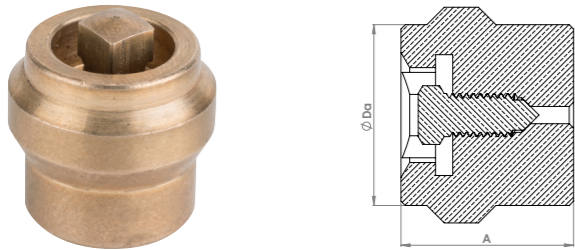
Code	Size	A	B	C	Xa	Xb	Xc
EFMUC.1512	15mm x 1/2"	53			11	15	
EFMUC.2234	22mm x 3/4"	57			12	16	
EFMUC.281	28mm x 1"	64			14	18	
EFMUC.35114	35mm x 1 1/4"	70			16	20	
EFMUC.42112	42mm x 1 1/2"	73			17	20	
EFMUC.542	54mm x 2"	80			19	21	

FA Adaptor Female Straight



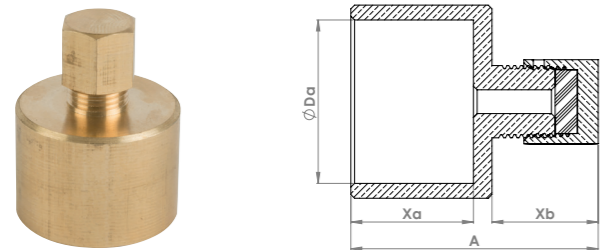
Code	Size	A	B	C	Xa	Xb	Xc
FA.1512	15mm x 1/2"	35			15	17	
FA.2234	22mm x 3/4"	43			23	18	
FA.281	28mm x 1"	50			26	21	

371.1 Air Vent



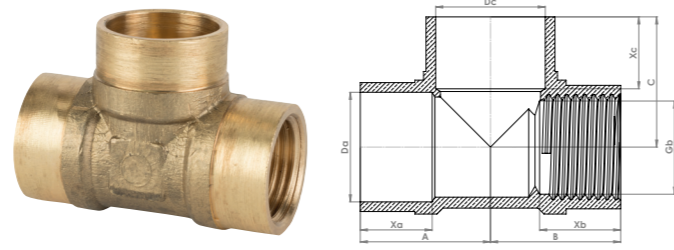
Code	Size	A	B	C	Xa	Xb	Xc
371.1	1/2"	16					

P440EF Air Vent



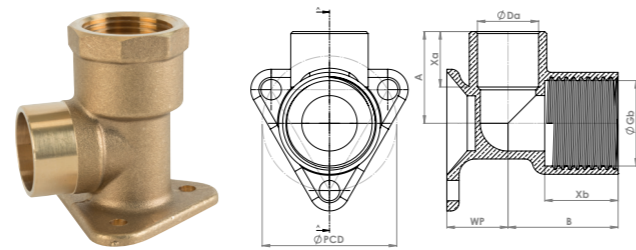
Code	Size	A	B	C	Xa	Xb	Xc
P440EF.1	15mm	26			11	13	
P440EF.2	22mm	32			16	13	

P737EF Adaptor Tee - Female End



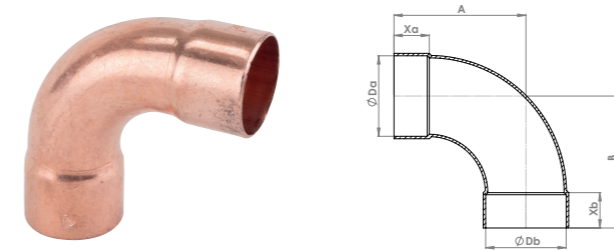
Code	Size	A	B	C	Xa	Xb	Xc
P737EF.1	15 x 1/2" x 15mm	22	22	21	10	10	13
P737EF.2	22 x 1/2" x 22mm	26	26	26	15	16	15

P803WPEF Adaptor Wallplate Elbow



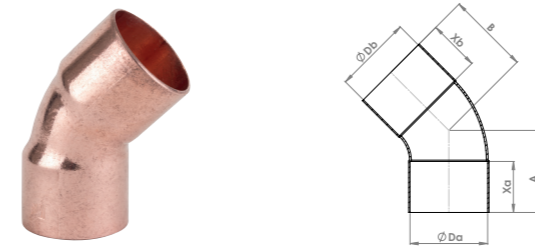
Code	Size	A	B	C	Xa	Xb	Xc
P803WPEF.2	15mm x 1/2"	25	23	15	15	15	17
P803WPEF.5	22mm x 3/4"	34	30	22	17	16	20

5002A Long Radius Elbow



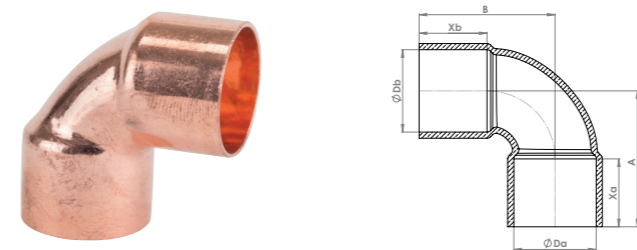
Code	Size	A	B	C	Xa	Xb	Xc
5002A.76	76 x 76mm	125	125	33	33		
5002A.108	108 x 108mm	177	177	47	47		

5041 Elbow 45°



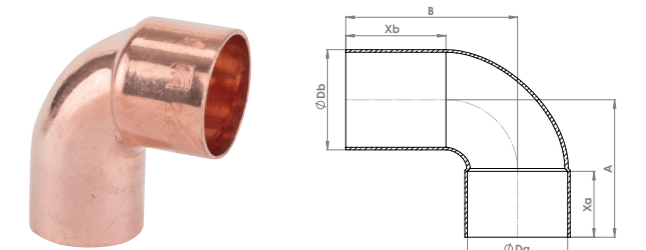
Code	Size	A	B	C	Xa	Xb	Xc
5041.67	67 x 67mm	65	65	36	36		
5041.76	76 x 76mm	68	68	36	36		
5041.108	108 x 108mm	110	110	50	50		
5041.133	133 x 133mm	280	280	45	45		
5041.159	159 x 159mm	335	335	45	45		

5090 Elbow



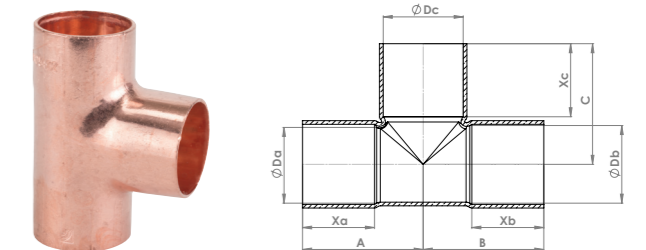
Code	Size	A	B	C	Xa	Xb	Xc
5090.67	67 x 67mm	83	83	33	33		
5090.76	76 x 76mm	91	91	33	33		
5090.108	108 x 108mm	127	127	47	47		
5090.133	133 x 133mm	127	127	47	47		
5090.159	159 x 159mm	160	160	60	60		

5092 Elbow Street



Code	Size	A	B	C	Xa	Xb	Xc
5092.76	76 x 76mm	91	105		58		

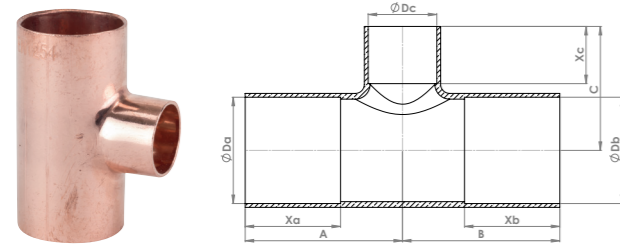
5130 Tee



Code	Size	A	B	C	Xa	Xb	Xc
5130.67	67 x 67 x 67mm	78	78	78	36	36	36
5130.76	76 x 76 x 76mm	80	80	80	34	34	34
5130.108	108 x 108 x 108mm	112	112	112	48	48	48
5130.133	133 x 133 x 133mm	135	135	135	50	50	50
5130.159	159 x 159 x 159mm	160	160	160	60	60	60

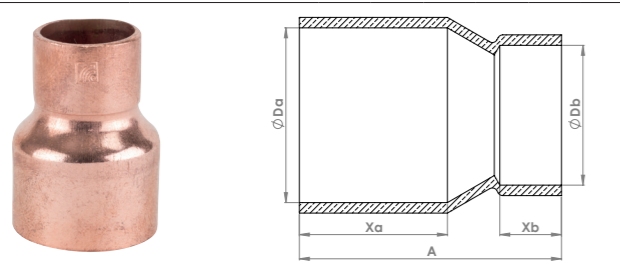
Large Size End Feed Fittings

5130R Tee Reducing



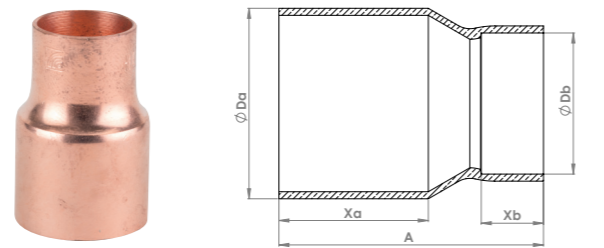
Code	Size (mm)	A	B	C	Xa	Xb	Xc
5130R.672867	67 x 67 x 28	54	54	61	21	42	35
5130R.673567	67 x 67 x 35	58	58	64	25	41	21
5130R.674267	67 x 67 x 42	61	61	67	27	41	27
5130R.675467	67 x 67 x 54	67	67	74	33	42	33
5130R.762876	76 x 76 x 28	59	59	70	25	46	25
5130R.763576	76 x 76 x 35	59	59	70	25	46	25
5130R.764276	76 x 76 x 42	63	63	74	29	46	29
5130R.765476	76 x 76 x 54	69	69	79	35	46	35
5130R.766776	76 x 76 x 67	78	78	81	44	48	44
5130R.10822108	108 x 108 x 22	72	72	88	24	72	24
5130R.10835108	108 x 108 x 35	77	77	92	29	65	29
5130R.10842108	108 x 108 x 42	80	80	97	32	70	32
5130R.10854108	108 x 108 x 54	86	86	97	38	65	38
5130R.10867108	108 x 108 x 67	91	91	97	43	64	43
5130R.10876108	108 x 108 x 76	95	95	97	47	64	47
5130R.133108133	133 x 133 x 108	139	139	142	89	94	89
5130R.15954159	159 x 159 x 54	90	90	118	42	86	42
5130R.15967159	159 x 159 x 67	101	101	120	53	86	53
5130R.15976159	159 x 159 x 76	101	101	120	53	86	53
5130R.159108159	159 x 159 x 108	117	117	142	69	94	69
5130R.159133159	159 x 159 x 133	130	130	120	92	86	82
5130R.219159219	219 x 219 x 159	185	185	175	115	110	107

5240 Coupler Reducing



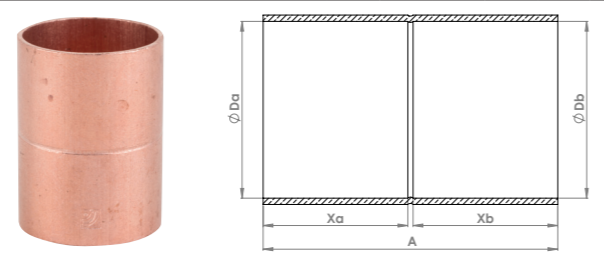
Code	Size	A	B	C	Xa	Xb	Xc
5240.6742	64 x 54mm	78					
5240.6754	67 x 54mm	85					
5240.7654	76 x 54mm	84					
5240.7667	76 x 67mm	85					

5243 Coupler Fitting Reducer



Code	Size	A	B	C	Xa	Xb	Xc
5243.6722	67 x 22mm	80				20	
5243.6728	67 x 28mm	80				20	
5243.6735	67 x 35mm	80				20	
5243.6742	67 x 42mm	88				30	
5243.6754	67 x 54mm	80				32	
5243.7635	76 x 35mm	90				30	
5243.7642	76 x 42mm	90				30	
5243.7654	76 x 54mm	85				35	
5243.7667	76 x 67mm	81				32	
5243.10835	108 x 35mm	116				32	
5243.10842	108 x 42mm	116				42	
5243.10854	108 x 54mm	116				32	
5243.10867	108 x 67mm	112				32	
5243.10876	108 x 76mm	108				36	
5243.133108	133 x 108mm	106				36	
5243.13367	133 x 67mm	119				32	
5243.13376	133 x 76mm	119				36	
5243.159108	159 x 108mm	150				40	
5243.159133	159 x 133mm	160				40	
5243.15976	159 x 76mm	120				30	
5243.219159	219 x 159mm	169				45	

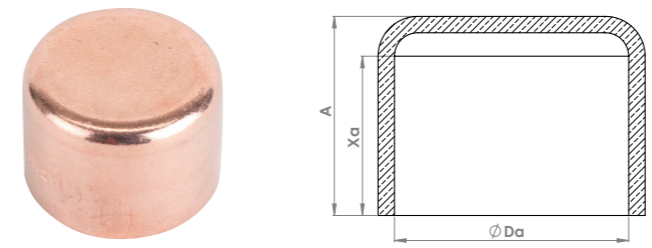
5270 Coupler



Code	Size	A	B	C	Xa	Xb	Xc
5270.67	67 x 67mm	72				33	33
5270.76	76 x 76mm	72				33	33
5270.108	108 x 108mm	100				47	47
5270.133	133 x 133mm	100				47	47
5270.159	159 x 159mm	100				47	47
5270.219	219 x 219mm	125				75	75

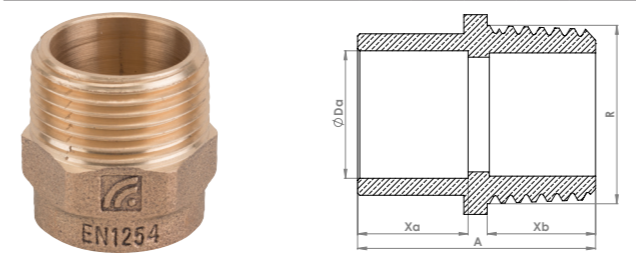
Large Size End Feed Fittings

5301 Stop End



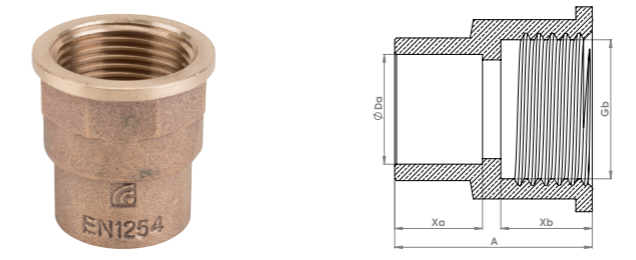
Code	Size	A	B	C	Xa	Xb	Xc
5301.67	67mm	35				33	
5301.76	76mm	35				33	
5301.108	108mm	49				47	
5301.159	159mm	64				62	

4243G Adaptor Male Straight



Code	Size	A	B	C	Xa	Xb	Xc
4243G.67X2.1/2	67mm x 2 1/2"	72				32	31
4243G.76X3	76mm x 3"	76				34	31
4243G.108X4	108mm x 4"	98				47	37

4270G Adaptor Female Straight



Code	Size	A	B	C	Xa	Xb	Xc
4270G.67X2.1/2	67mm x 2 1/2"	64				32	28
4270G.76X3	76mm x 3"	65				33	28
4270G.108X4	108mm x 4"	83				48	31