

# EUROPEAN WATER CLOSETS



AMERICAN BURMA EWC "S"  
CONCEALED CODE 2030



EWC WATER CLOSET 'P'  
CODE 2005



EWC WATER CLOSET "S"  
CODE 2005 A



CERAMIC CISTERN 12.5 L  
CODE 2006



CAPRICE BIDET SINGLE HOLE  
CODE 2019



CAPRICE EWC "S" CONCEALED  
WITH CISTERN CODE .2011



CAPRICE EWC "P" CONCEALED  
WITH CISTERN CODE 2010



GOLF CLASSIC EWC "S" & "P"  
WITH CISTERN CODE 2041



ARISTON EWC "S" & "P" CONCEALED  
WITH CISTERN CODE 2031



ORIENT EWC'S' CONCEALED  
WITH CISTERN CODE W208



HYGINE EWC "S" & "P"  
+ CISTERN CODE 2050



ACQUA EWC "S" & "P"  
+ CISTERN CODE 2060



SPENTA ONE PC EWC "S"  
CODE 5050



LATINA ONE PC EWC "S"  
CODE 5060

# WASH BASINS WITH PEDESTAL



**REPOSE**  
CODE 1008 (22" X 16")



**CRESENT**  
CODE 1020 (20" X 16")



**CROWNEE**  
CODE 1013 (21"X16")



**GRACIA**  
CODE 1015 (25"X18")



**CAPRICE**  
CODE 1010 (25" X 20")



**CORNET**  
CODE 1009 (25"X18")



**BRISTOL**  
CODE 1080 (25"X20")



**COGNAC**  
CODE 1082 (22" X 17")



**SPENTA HALF PEDESTAL**  
CODE W075 (23"X18")



**CELLESTE**  
CODE W027 (25" X 20")



**SUPREME**  
CODE J05 (25"X 20"& 22"X 17")



**SUPREME**  
CODE W030 (21" X 17")



**ORIENT**  
CODE W003 (25" X 20")



**VIVA**  
CODE W041 (24" X 20")

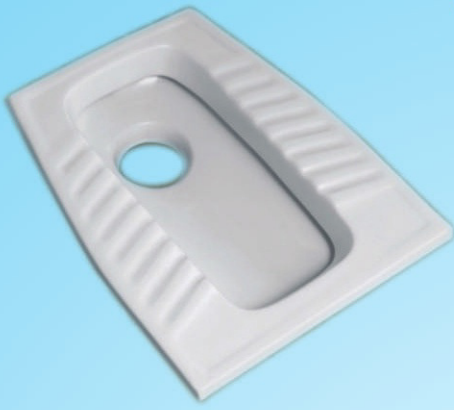


**JADE**  
CODE W040 (25" X 22")



**PRIME**  
CODE W032 (26"X20")

# **WATER CLOSET PANS**



**EASTERN  
CODE 2004 (21"x17"x5")**



**MEDIUM DEEP ORISSA PAN  
CODE 2003 (20"x16"x8")**



**FULLDEEP ORISSA PAN  
CODE 2002 (20"x16"x10")**



**INDIAN WATER CLOSET (IWC)  
CODE 2001 (18", 20" & 23")**



**INDIAN WC (FLAT BACK)  
CODE 2000 (18", 20" & 23")**



**CHINESE M. D. PAN WITH P-TRAP  
CODE 2054 (22"x 18" x 10")**



**KHAZZAFF SQ. PAN  
CODE 2017 (21"x17"x 7")**



**EMIRAT SQUATTING PAN  
CODE 2015 (22"x16"x8")**



**SUDANISE SQUATTING PAN  
CODE 2052 (20"x16"x6")**



**TURKISH WC PAN  
CODE 2051 (21"x 21"x 8")**



**LEBANESE SQUATTING PAN  
CODE 2016 (22"x19"x7")**



**TURKISH  
CODE 2053 (22"x19"x7")**

# WASH BASINS



**BABY WASH BASIN**  
CODE 1000 (11" X 14")



**RADO WASH BASIN**  
CODE 1001 (14" X 11")



**BENTIUM WASH BASIN**  
CODE 1003 (18" X 12")



**INDUS WASH BASIN**  
CODE 1054 (15" X 12")



**SHELLY WASH BASIN**  
CODE 1027 (18" X 13")



**SPOUSE WASH BASIN**  
CODE 1055 (18" X 16")



**CORNER WASH BASIN**  
CODE 1002 (16" X 16")



**STANLEY WASH BASIN**  
CODE 1060 (16" X 14")



**TAIWAN WASH BASIN**  
CODE 1006 (20" X 16")



**COTTAGE WASH BASIN**  
CODE 1056 (18" X 14")



**PRINCE WASH BASIN**  
CODE 1057 (18" X 14")



**ARISTON WASH BASIN**  
CODE 1058 (16" X 13" & 20" X 16")

# ***NEW BATHROOM SETS***



**ANCHOR ITALIAN SET SUITE**



**ORIENT R. A. K SUITE**



**MAHARAJA SUITE**



**JADE SUITE**



**CASCADE SUITE**



**TRUSTED SUITE**

# OTHER BATHROOM WARES



URINAL FLAT BACK  
CODE 2007 (15"X13"X10")



URINAL PARTITION  
CODE 2027 (28" X 13")



TYFORD MINI STALL URINAL  
CODE 2025 (19"X11"X16")



TYFORD URINAL TANK  
CODE 2026 (10"X14"X10")



SQUATTING URINAL  
CODE 2020 (18"X 14")



COUNTER TOP WASH BASIN OVAL  
CODE 1024 (22" X 16")



WC FLUSHING MECHANISM  
SINGLE / DOUBLE PUSH  
BOTTOM / SIDE INLET



PVC ROUND MIRROR  
CODE 4000 (21"X21")



PVC FLUSHING CISTERN  
CODE 2080



LABORATORY SINK  
CODE 1090



"P" TRAP (4"X4")  
CODE 3008



"S" TRAP (4" X 4")  
CODE 3009



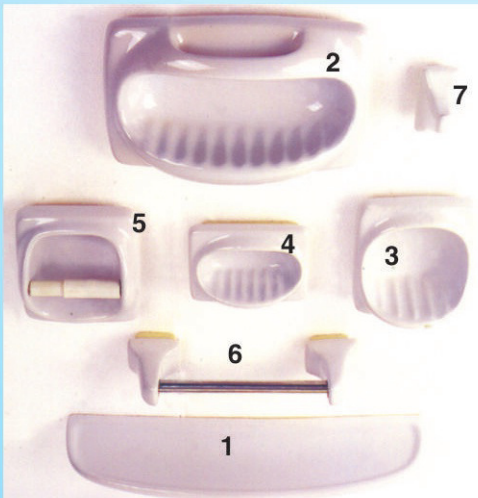
GULLY TRAP (4"X6") WHITE  
WITH PVC COVER CODE 3010



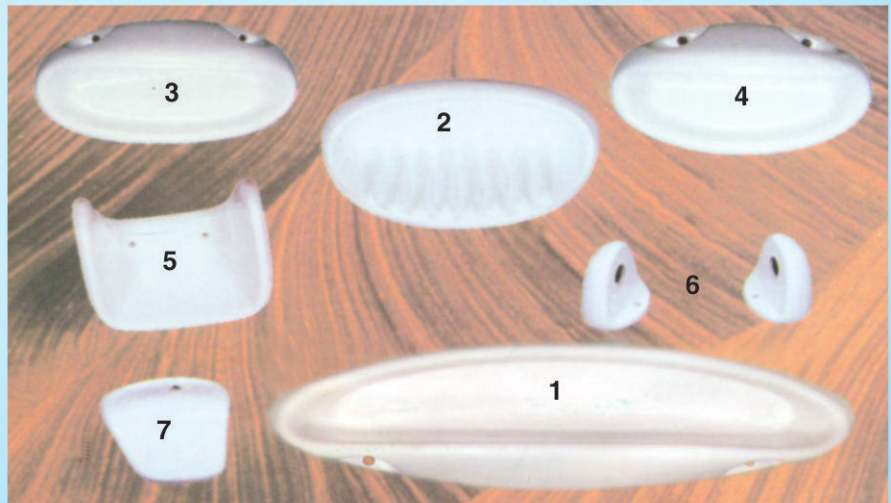
GULLY TRAP (4"X6") BROWN  
WITH PVC COVER CODE 3011



GULLY TRAP (4"X6") U.K.MODEL  
WITH PVC COVER CODE 3012



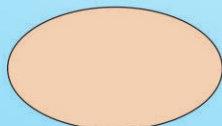
BATH ACCESSORIES (PLUG IN TYPE) 7 PCS CODE 3001  
1- MIRROR SHELF, SOAP DISH (2) 12"X6" (3) 6"X 6" (4) 4"X2"  
(5) PAPER HOLDER 6"X6" (6) TOWEL ROD (7) ROBE HOOK



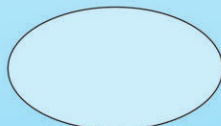
ORIENT BATH ACCESSORIES (SCREW TYPE) 7 PIECES CODE 3002  
1- MIRROR SHELF, SOAP DISH (2) LARGE (3) MEDIUM (4) SMALL  
(5) PAPER HOLDER (6) TOWEL ROD ENDS (7) ROBE HOOK



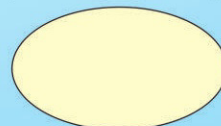
WHITE



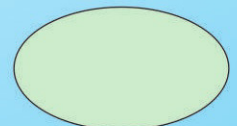
LIGHT PINK



LIGHT BLUE



IVORY



LIGHT GREEN

# ROOFING TILES & CERAMIC GLAZED WALL & FLOOR TILES

## DIGITAL WALL TILES 300X450 mm

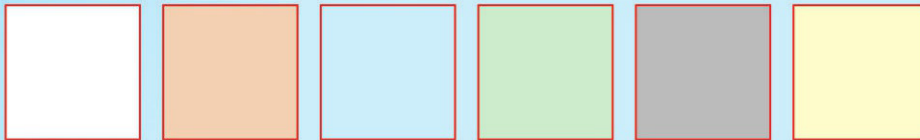


DIGITAL

## DIGITAL WALL TILES 300X600 mm

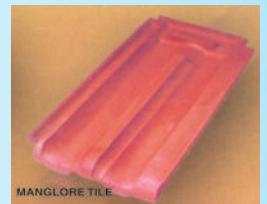


## Plain Wall Tiles 15 x 15 CM & 20 X 20 CM



DIGITAL ELEVATION TILES

## Printed Wall Tiles 20 x 30 CM & DIGITALWALL TILES 20 X 30 & 25X37.5 CM



MANGLORE TILE

CLAY ROOFING TILE

WHITE 200

202

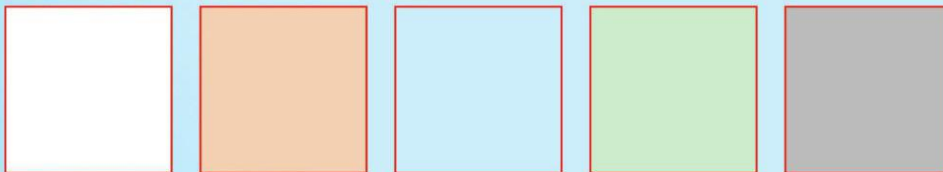
203

204

205

206

## Plain Floor Tiles 20 x 20 CM



## VITRIFIED 30X30 CM



## Printed Floor Tiles 30 x 30 CM and 40 x 40 CM



WHITE 100

103

GARDEN

VITRIFIED TILES 60x60cm

SUPER WHITE

CREMA MARFAL

Distributed by



www.anbisolutions.com